

# **Election Administration and UOCAVA Voting - The State and New Metrics**

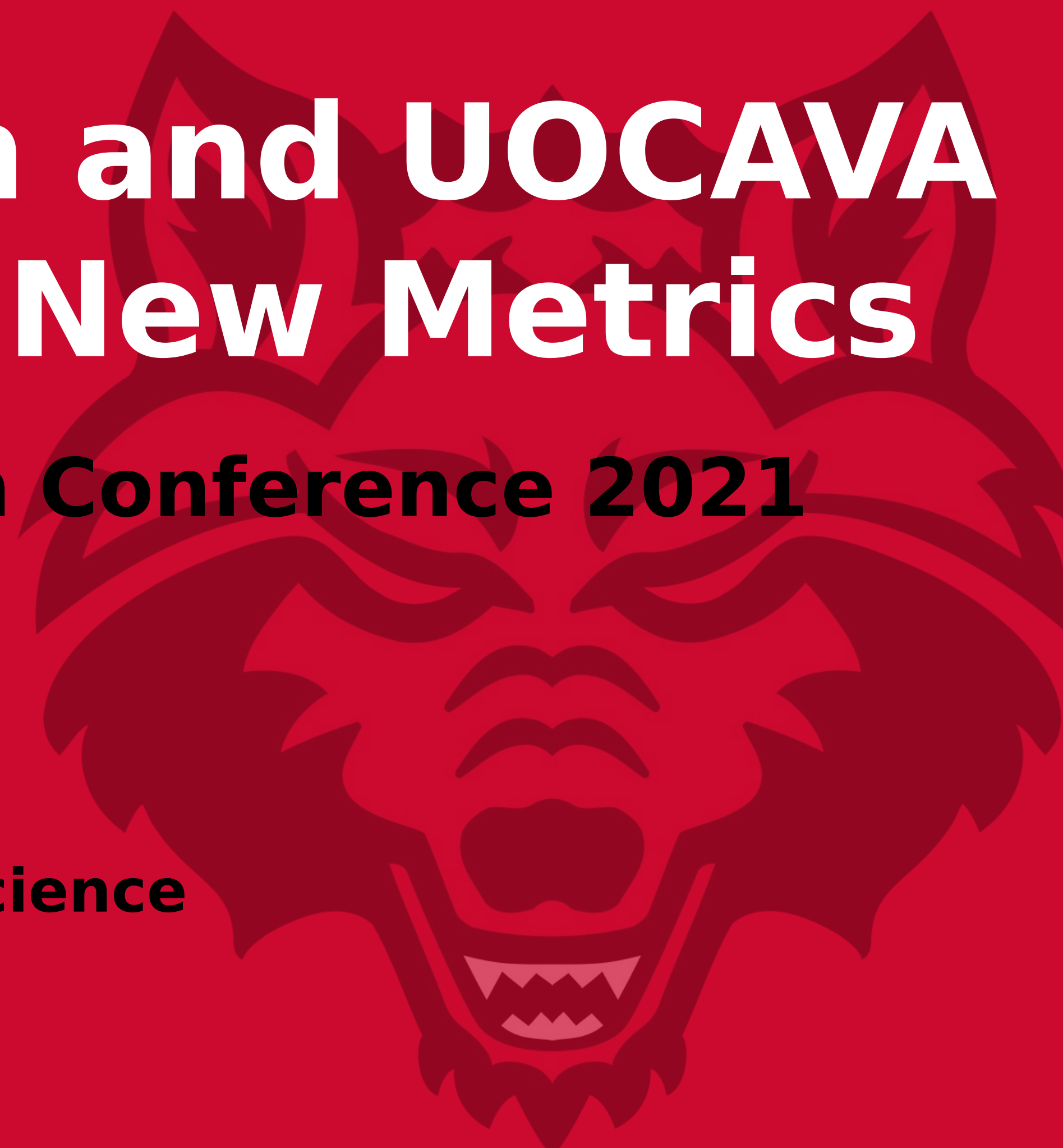
**Arkansas Political Science Association Conference 2021**

**Murat Abus**

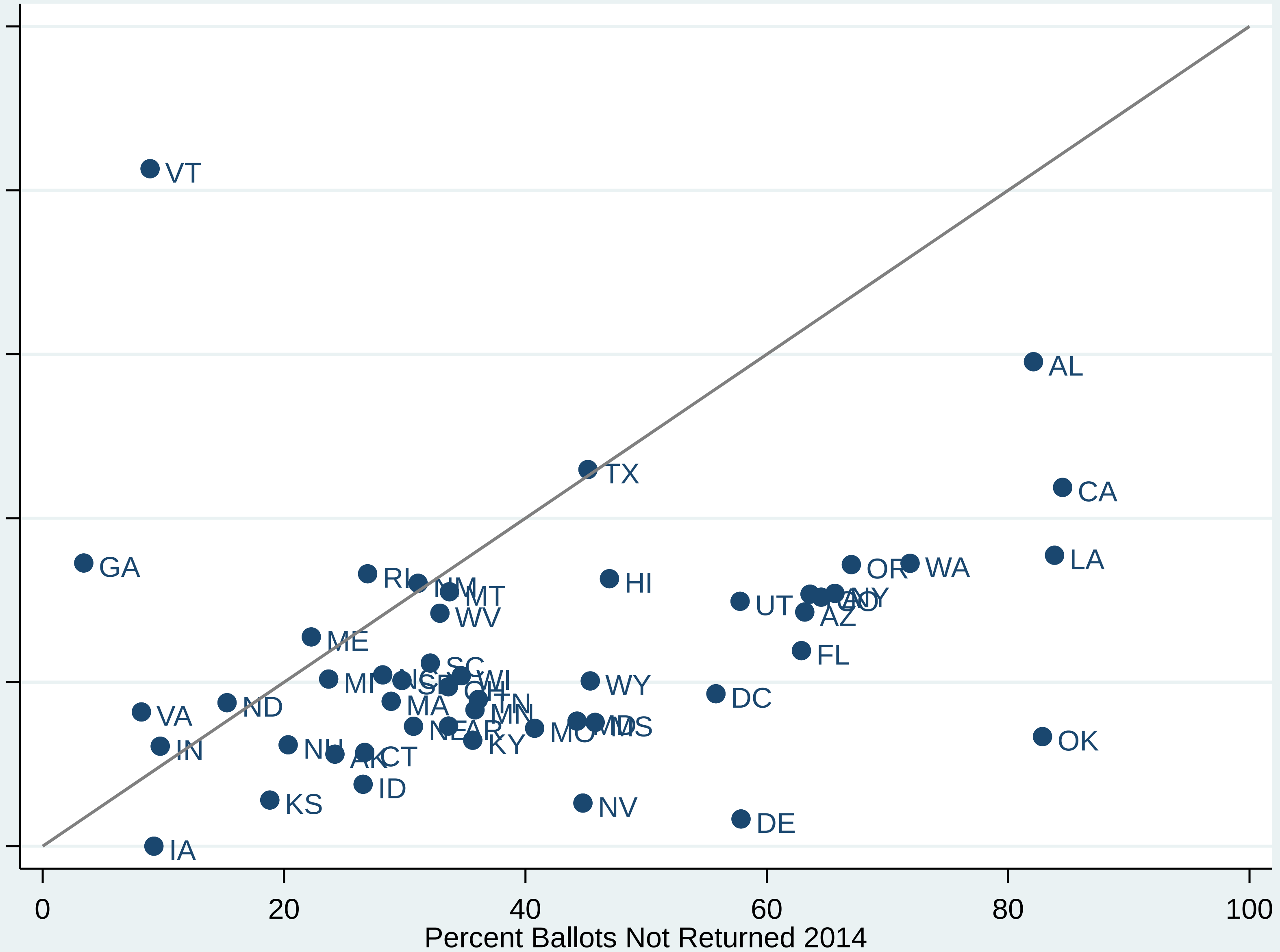
**Department of Political Science**



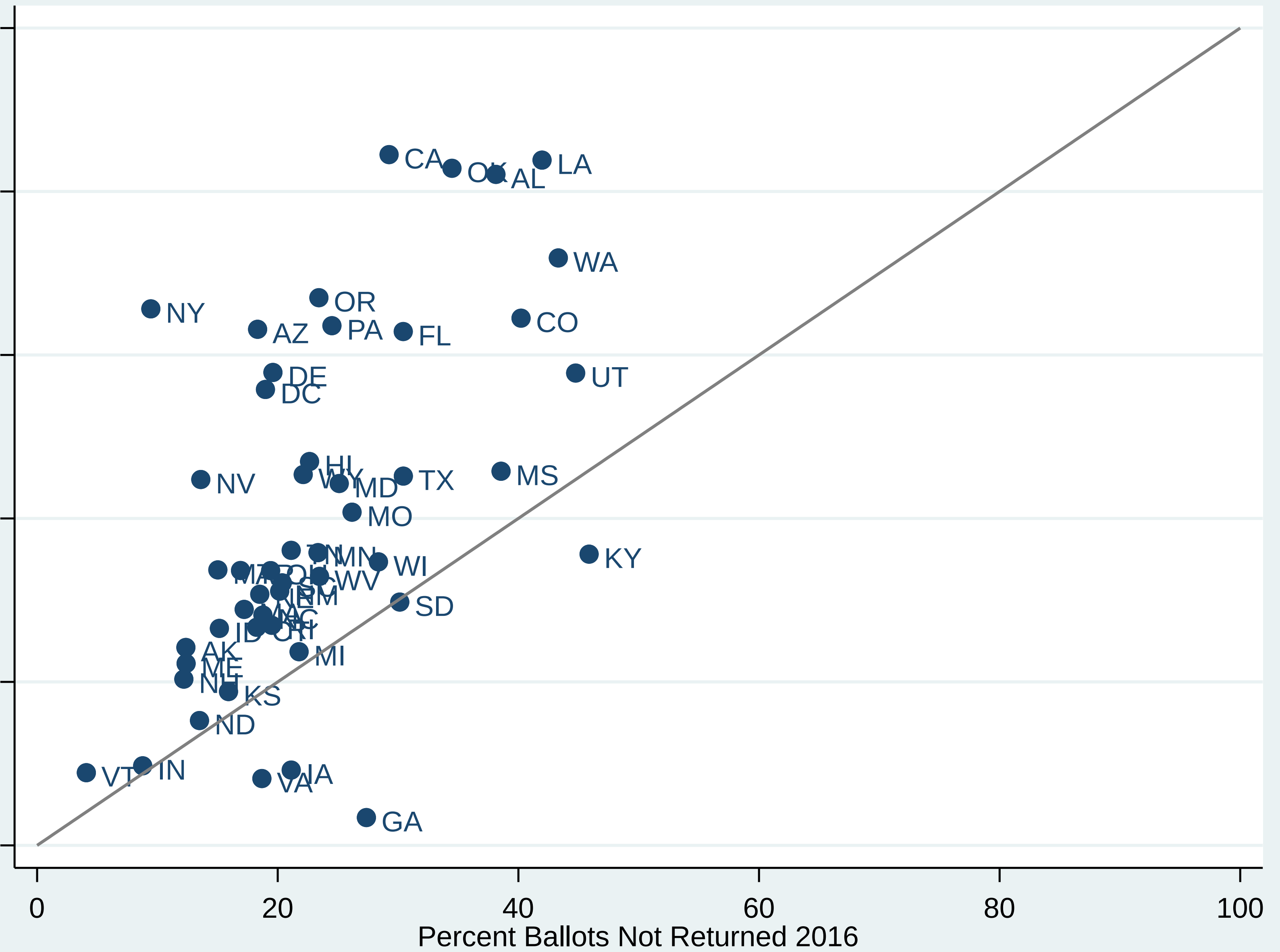
**ARKANSAS STATE  
UNIVERSITY**



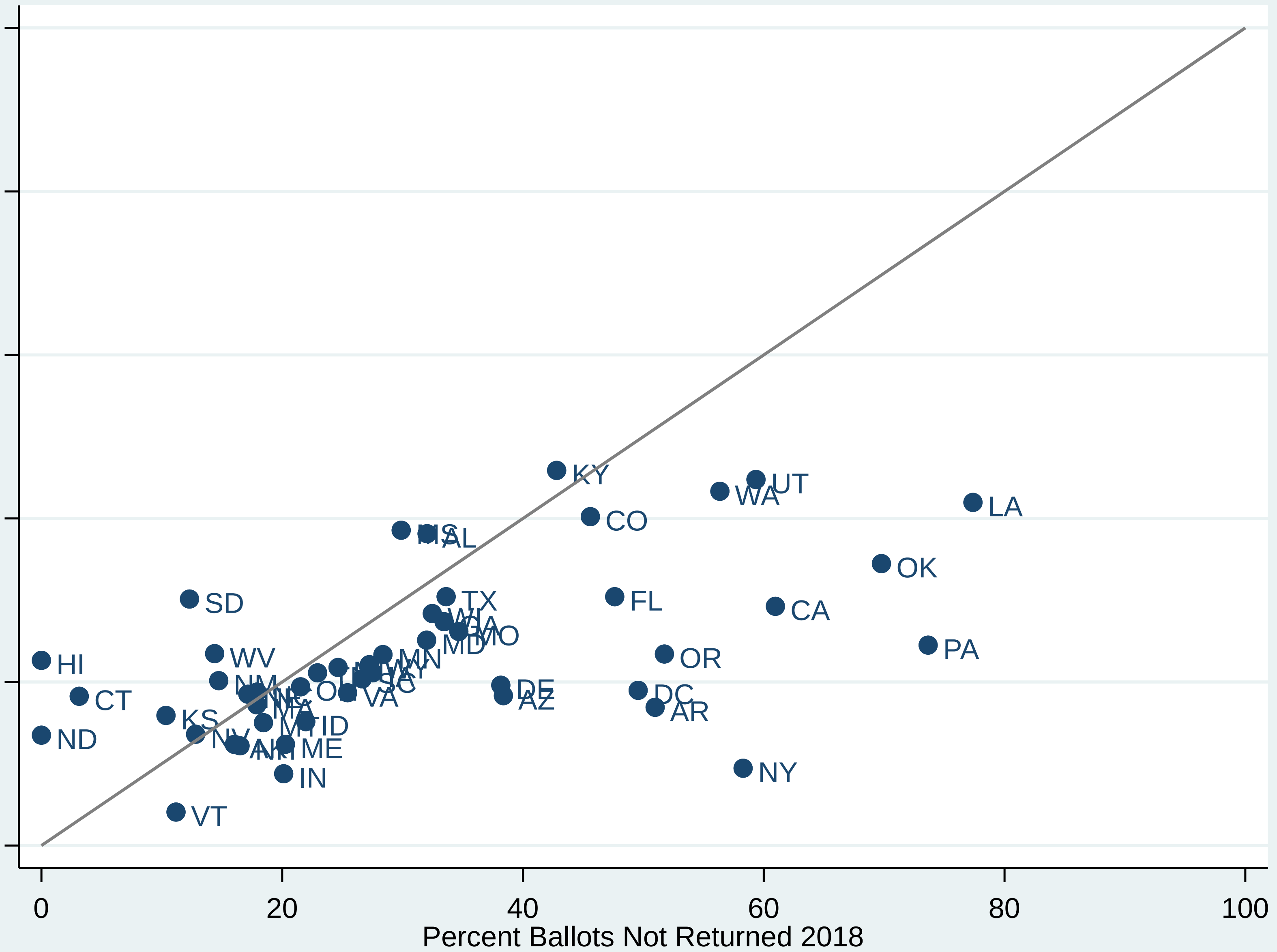
# UOCAVA Ballots Not Returned 2012 vs. 2014



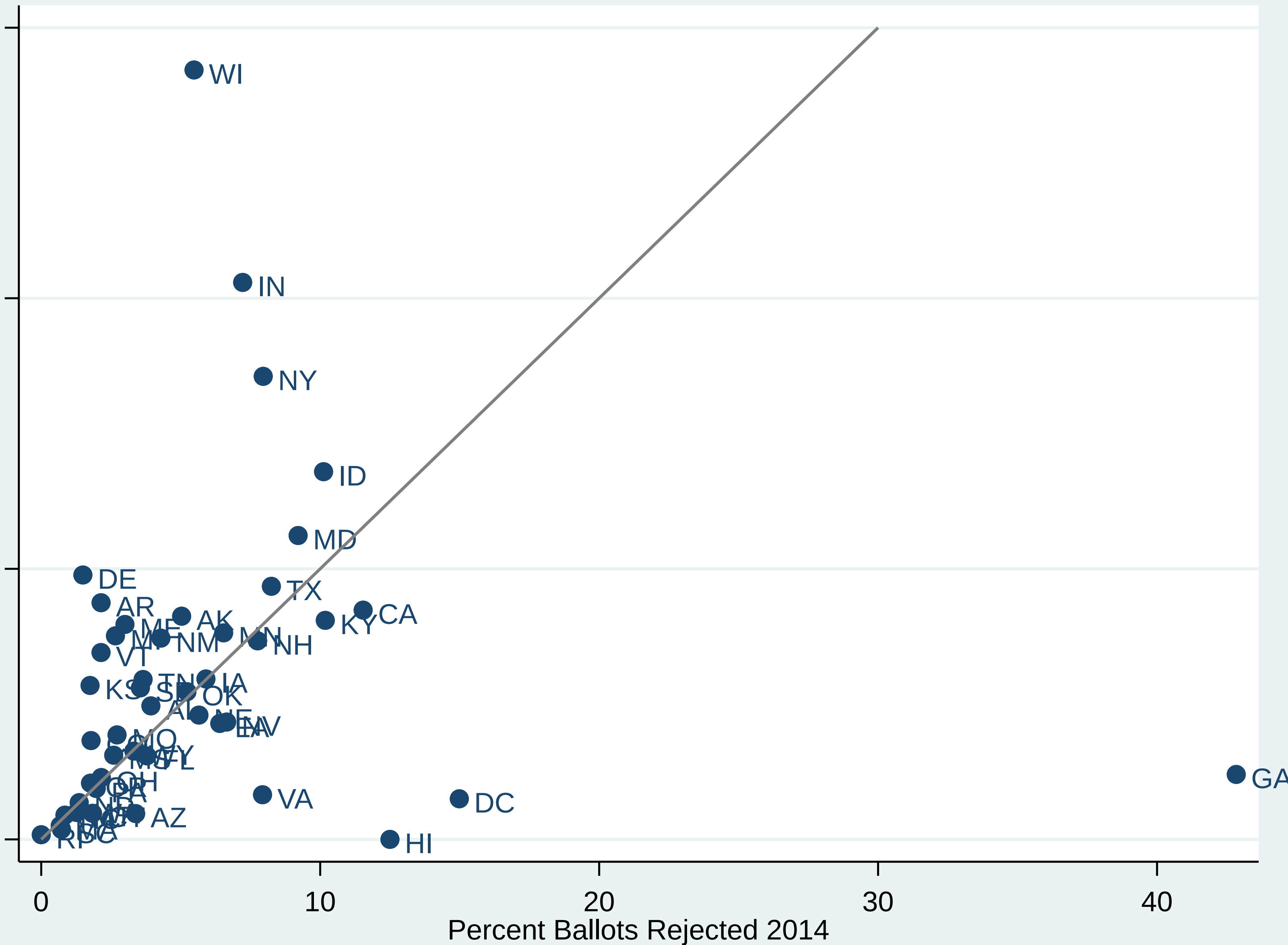
# UOCAVA Ballots Not Returned 2014 vs. 2016



# UOCAVA Ballots Not Returned 2016 vs. 2018

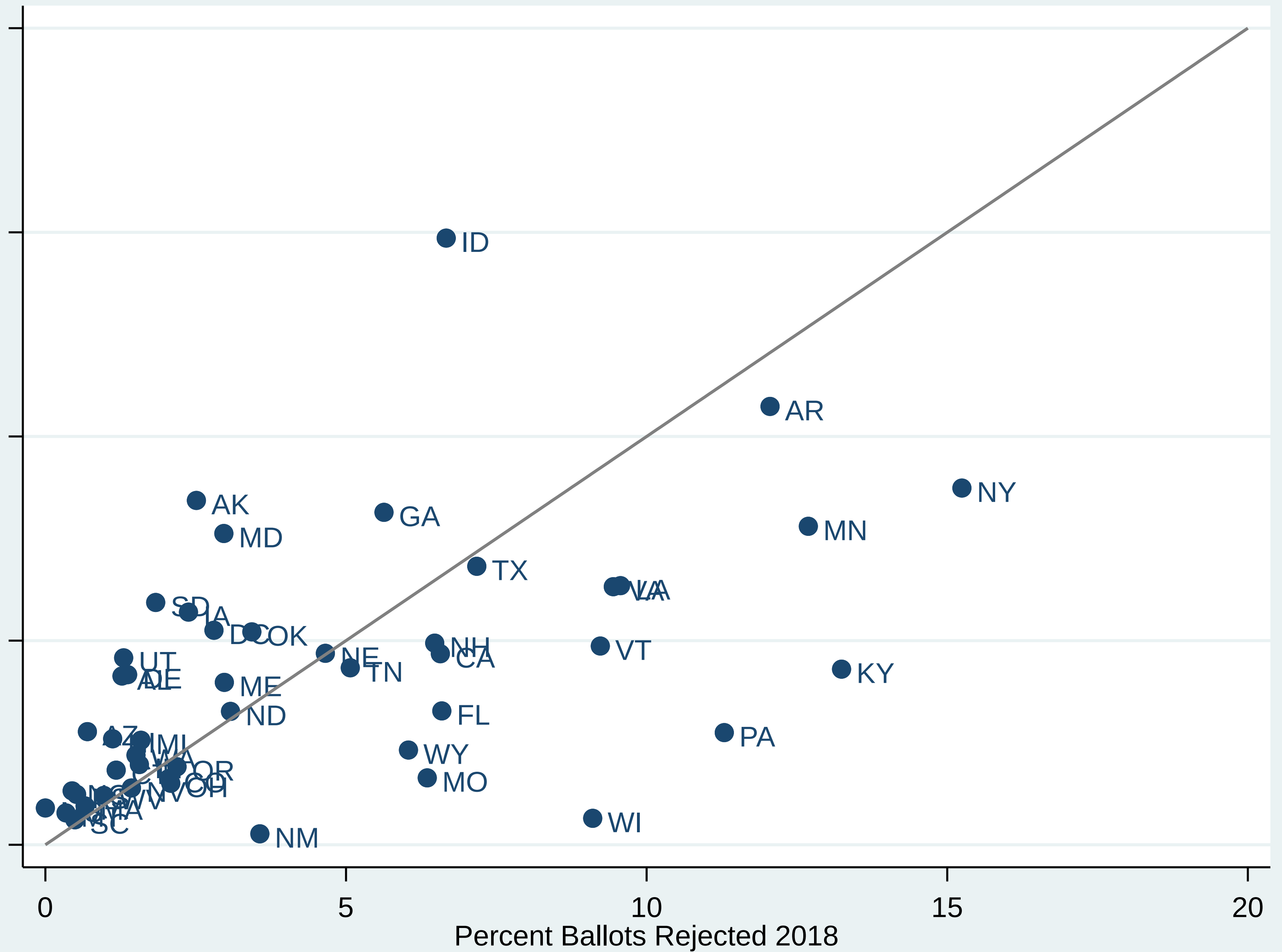


# UOCAVA Ballots Rejected 2012 vs. 2014



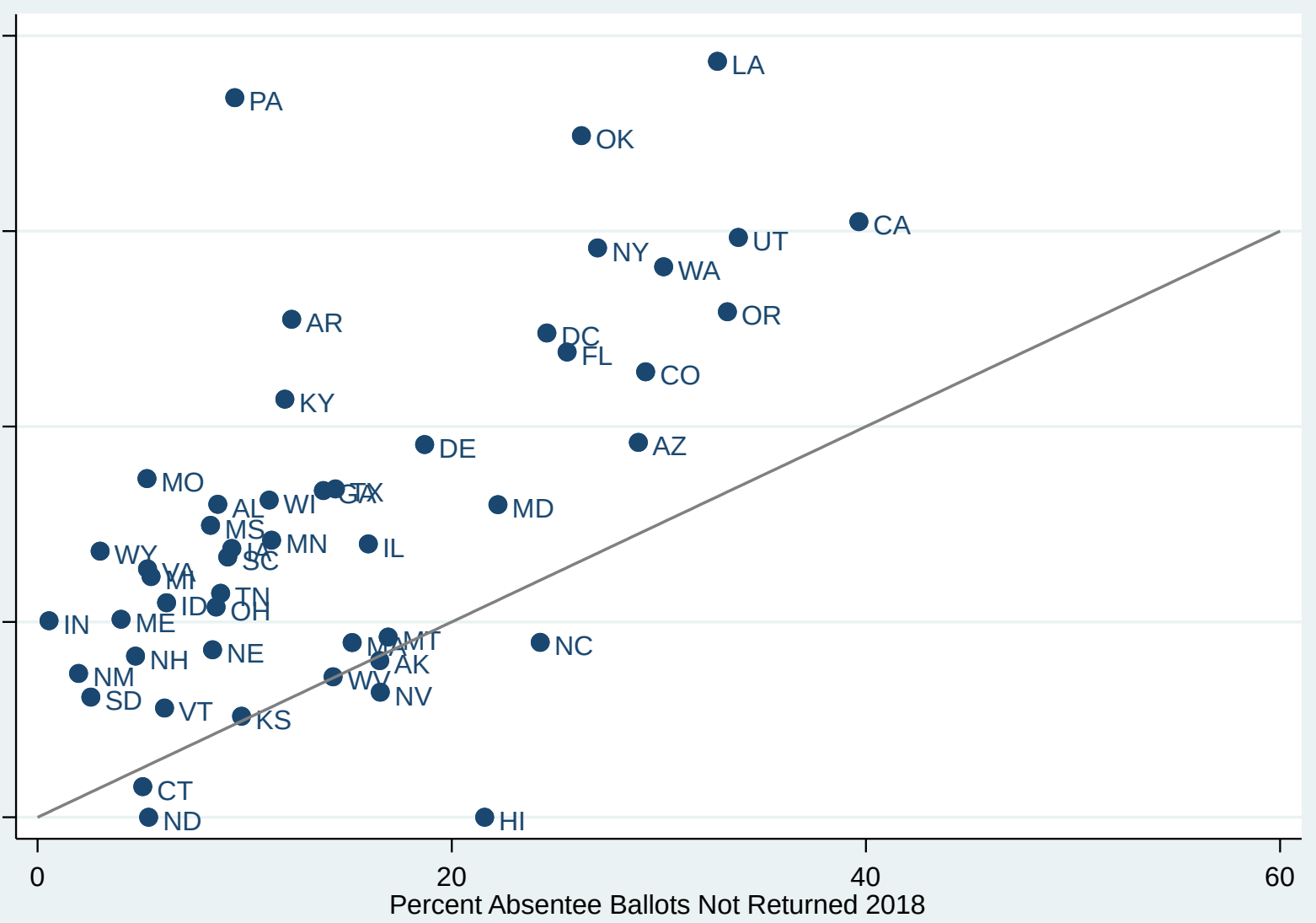
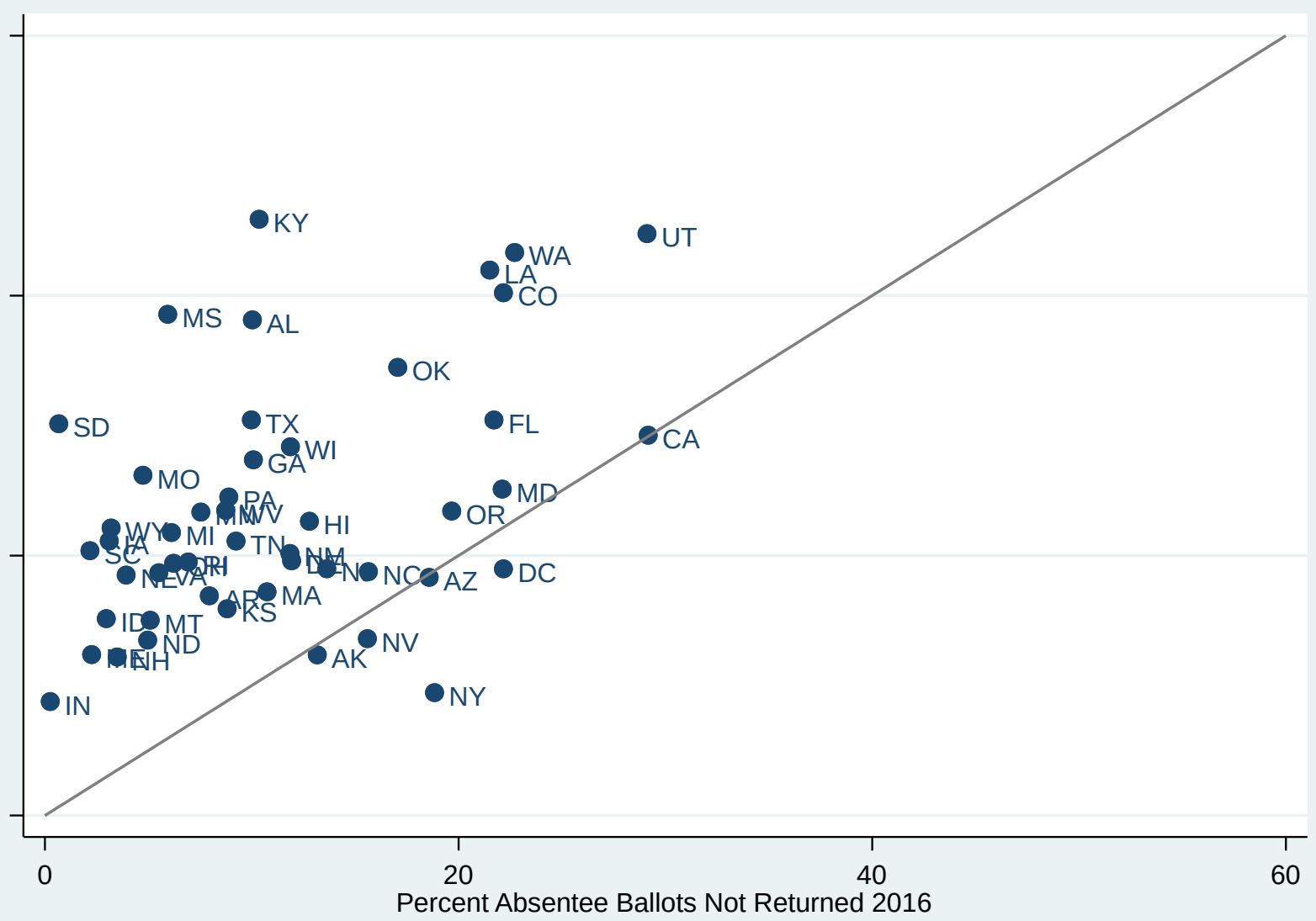
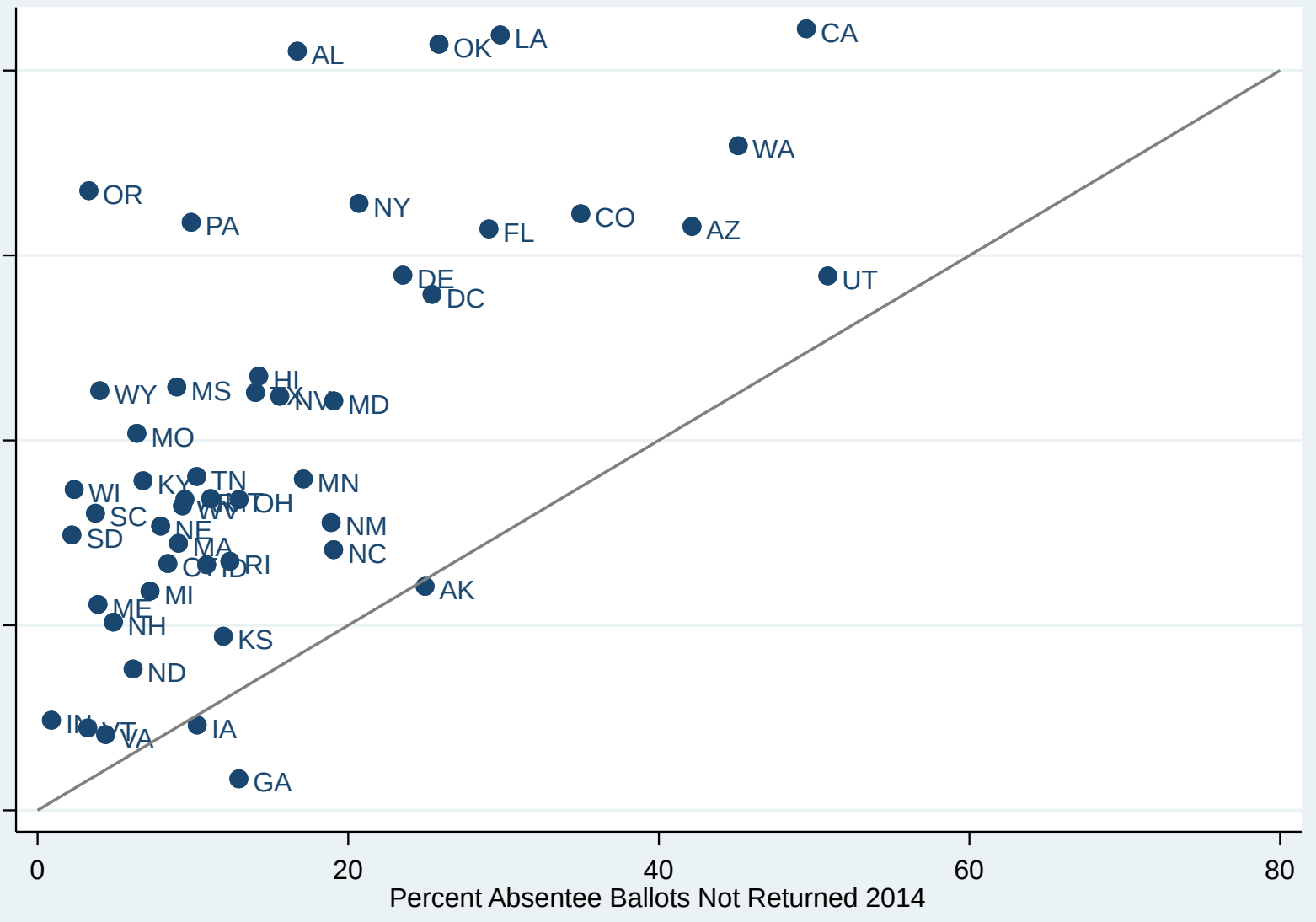
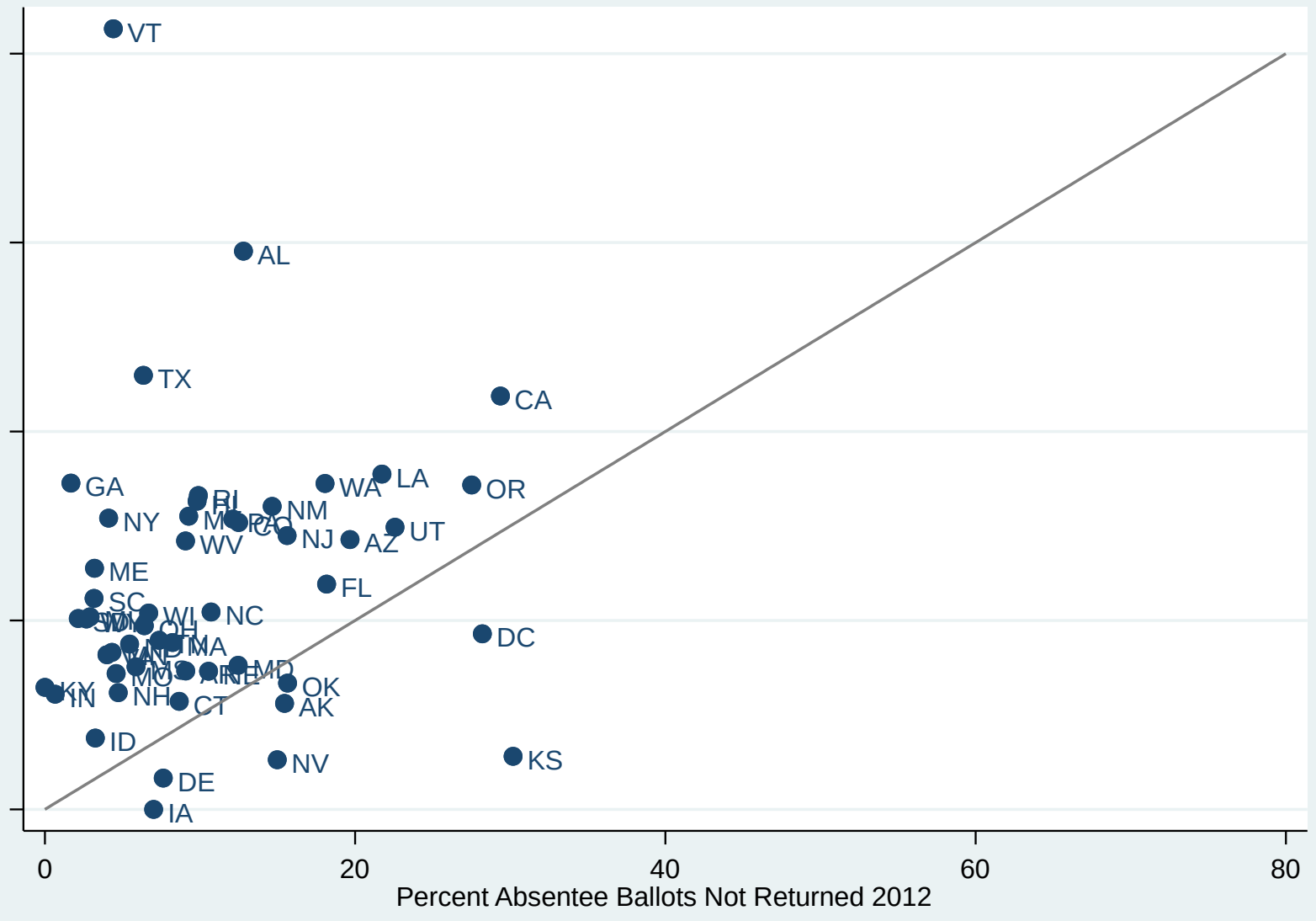


# UOCAVA Ballots Rejected 2016 vs. 2018



# UOCAVA vs. Absentee Ballots Not Returned (2012 - 2018)

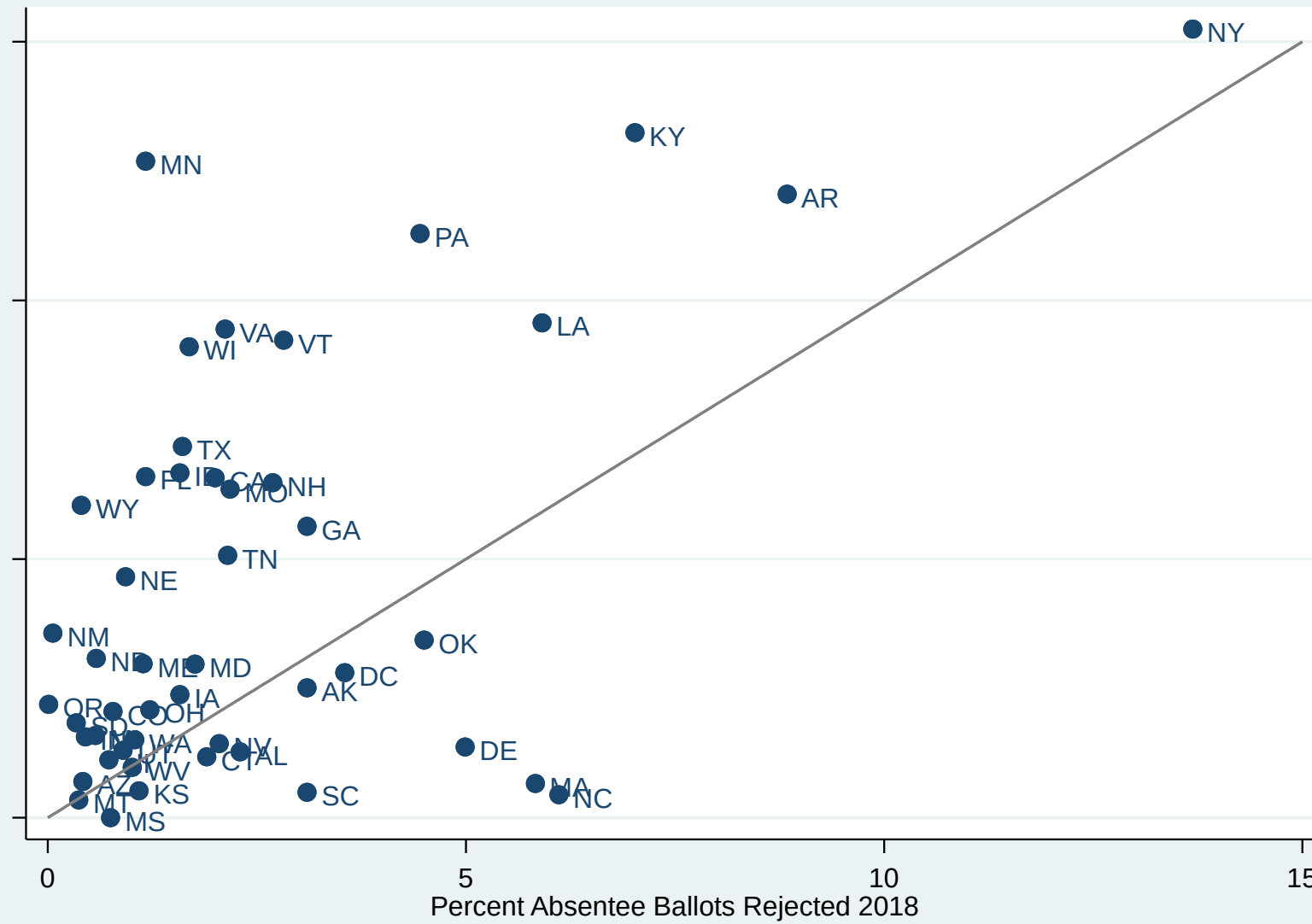
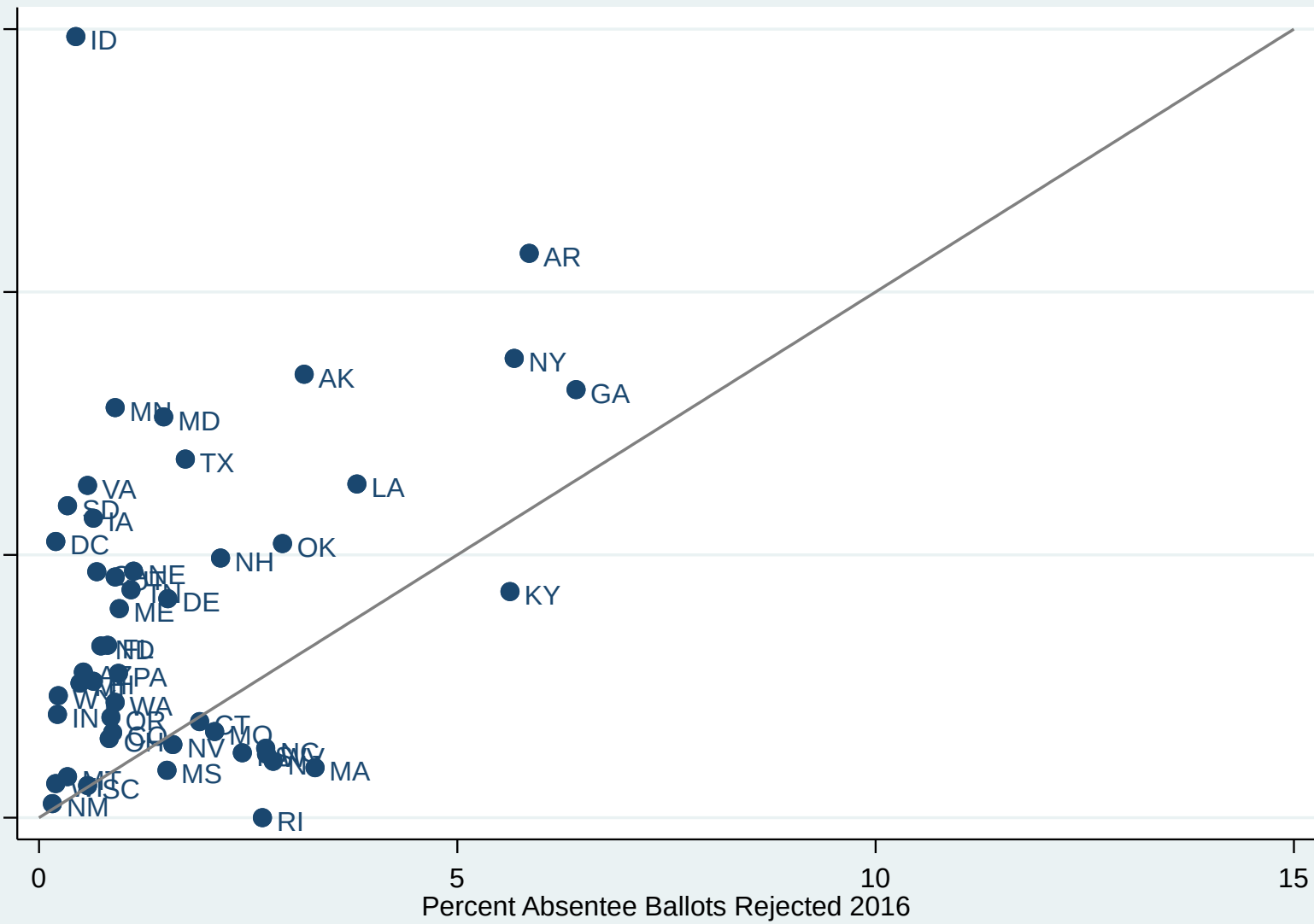
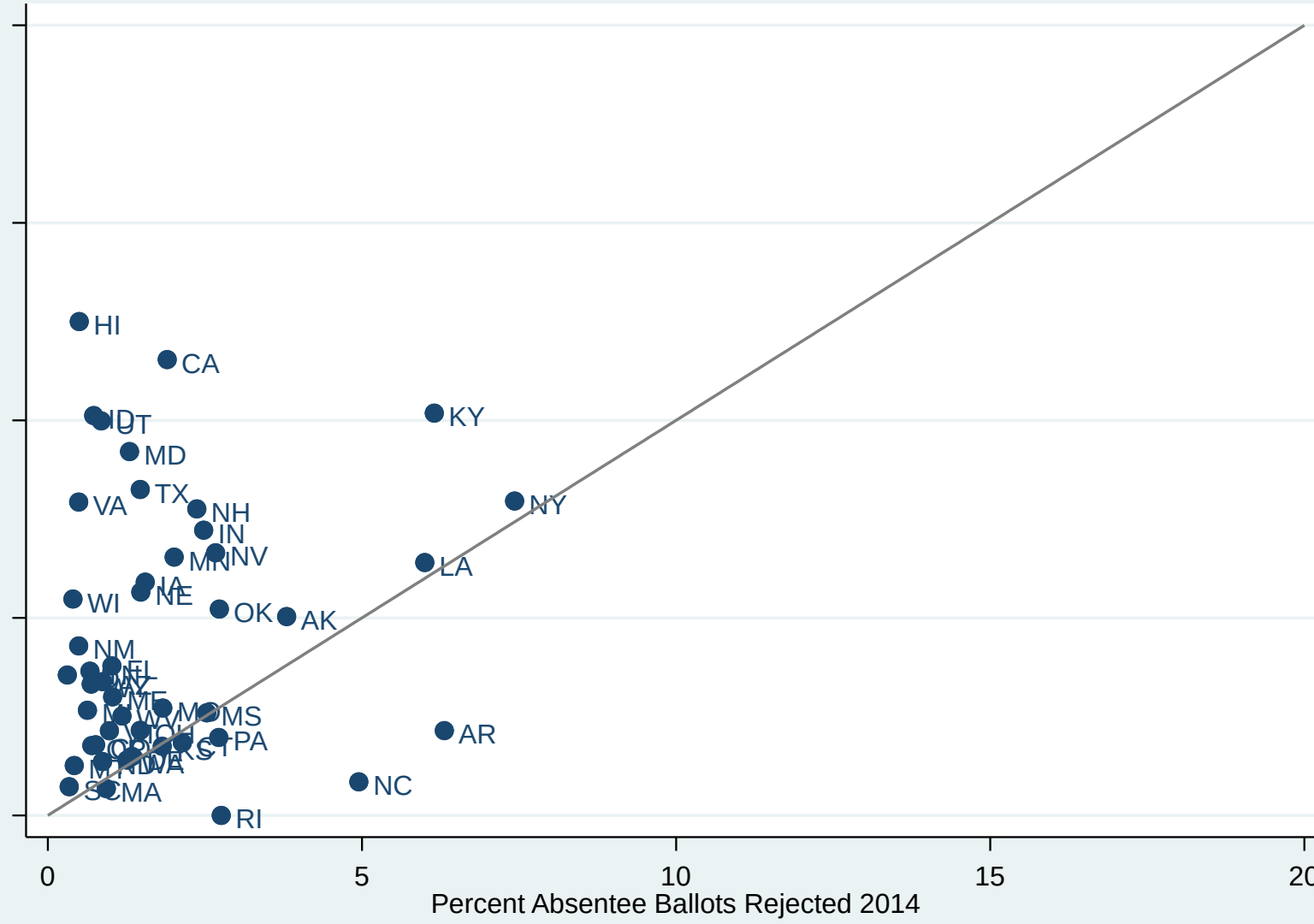
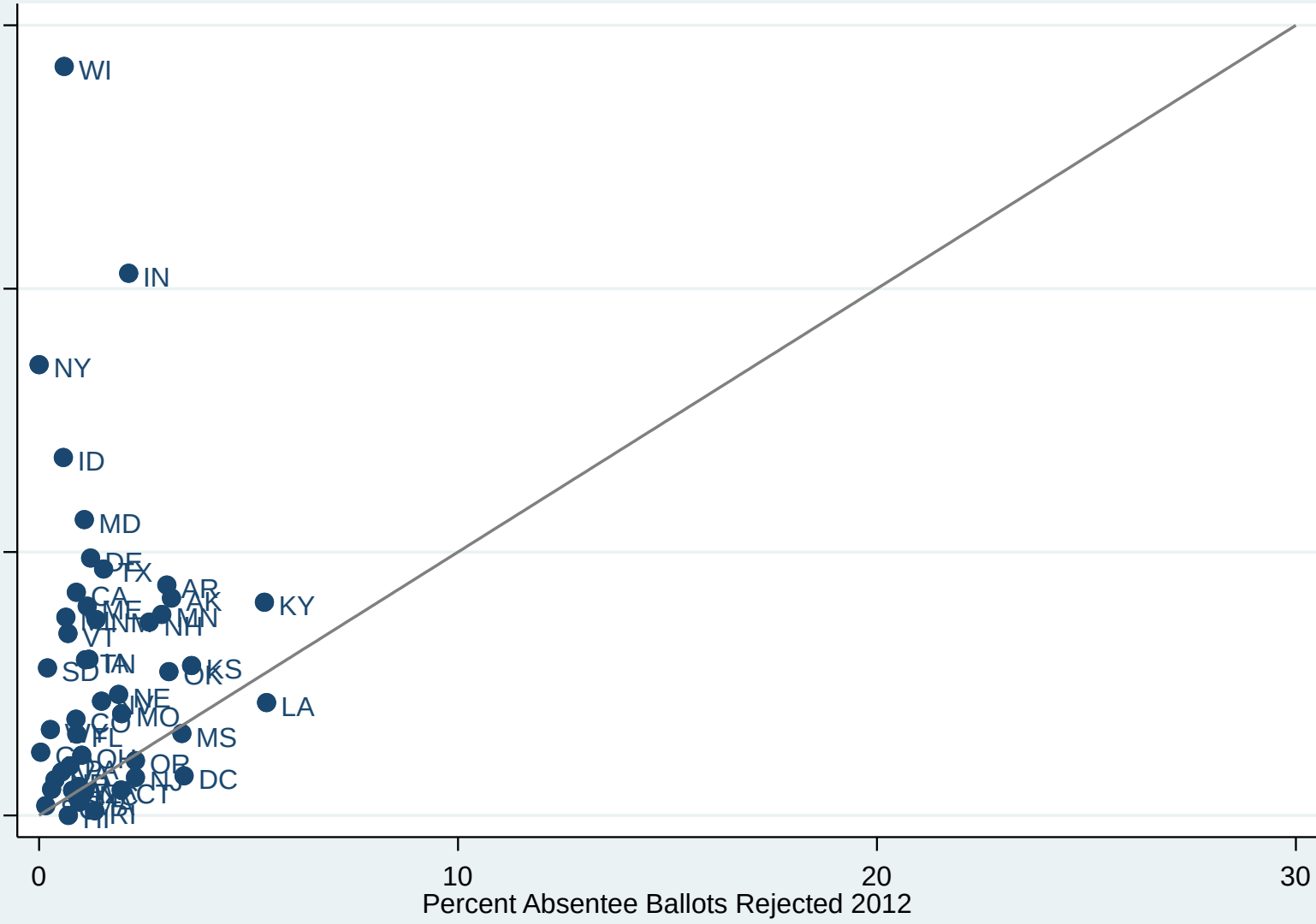
## UOCAVA and Absentee Ballot Return Rates





# UOCAVA vs. Absentee Ballots Rejected (2012-2018)

## UOCAVA and Absentee Ballot Rejection Rates



# State of Analysis with Old Variables – Ballots not Returned

Table 4. Analysis of Ballots Not Returned, 2008-2018

	2008	2010	2012	2014	2016	2018
Total Voters in State (millions)	0.019 (0.011)	<b>0.044 (0.015)</b>	<b>0.051 (0.016)</b>	0.021 (0.020)	<b>0.021 (0.011)</b>	<b>0.053 (0.014)</b>
Registration Facility Score	<b>-0.072 (0.034)</b>	-0.055 (0.036)	0.063 (0.071)	0.056 (0.154)	0.012 (0.100)	0.129 (0.112)
Ballot Facility Score	0.042 (0.028)	0.032 (0.033)	-0.175 (0.100)	0.118 (0.127)	0.097 (0.092)	0.105 (0.150)
Hybrid Voter Registration	0.216 (0.126)	0.064 (0.156)	0.167 (0.160)	<b>0.364 (0.205)</b>	0.216 (0.135)	0.026 (0.294)
Bottom-Up Voter Registration	-0.208 (0.114)	<b>-0.310 (0.153)</b>	-0.259 (0.175)	0.270 (0.204)	<b>-0.354 (0.140)</b>	-0.124 (0.209)
Constant	3.268	3.959	2.918	3.124	2.832	2.453
N	39	46	48	49	49	47
R <sup>2</sup>	0.175	0.274	0.182	0.136	0.162	0.162

Dependent variable is logged percentage of ballots not returned. For the voter registration variable, the omitted category is Top-Down registration. Robust standard errors are reported in parentheses.

Source: EAC EAVS 2008-2018, Hall (2014).



# State of Analysis with Old Variables – Ballots Rejected

Table 5. Analysis of Ballots Rejected, 2008-2018

	2008	2010	2012	2014	2016	2018
Total Voters in State (millions)	-0.031 (0.028)	0.010 (0.03)	0.030 (0.032)	0.024 (0.026)	0.021 (0.018)	<b>0.037 (0.019)</b>
Ballot Facility Score	-0.024 (0.072)	<b>-0.150 (0.070)</b>	0.048 (0.289)	-0.181 (0.196)	-0.227 (0.167)	<b>-1.140 (0.235)</b>
Constant	1.803	2.42	1.157	1.481	1.25	3.58
N	36	41	49	48	48	49
R <sup>2</sup>	-0.02	0.10	0.02	0.04	0.05	0.45

Dependent variable is logged percentage of ballots rejected. Robust standard errors are reported in parentheses.

Source: EAC EAVS 2008-2018, Hall (2014).



# Analysis of Ballots Not Returned with New Metrics

Table 6. Analysis of Ballots Not Returned, New Metrics, 2018

	I	II	III	IV	V
Total Voters in State (millions)	<b>0.038 (0.015)</b>	<b>0.031 (0.015)</b>	<b>0.033 (0.015)</b>	0.011 (0.015)	0.014 (0.013)
Registration Facility Score	<b>0.194 (0.108)</b>	0.160 (0.125)	<b>0.225 (0.119)</b>	<b>0.260 (0.130)</b>	<b>0.281 (0.109)</b>
Ballot Facility Score	0.125 (0.143)				
Hybrid Voter Registration	0.054 (0.261)	0.037 (0.267)	-0.037 (0.297)	0.004 (0.184)	-0.009 (0.177)
Bottom-Up Voter Registration	-0.137 (0.222)	-0.141 (0.256)	-0.152 (0.263)	-0.182 (0.329)	-0.042 (0.152)
Percent of Ballots Transmitted by Post	<b>0.010 (0.005)</b>				
Percent of Ballots Transmitted by Email		<b>-0.010 (0.005)</b>			-0.002 (0.005)
Percent of Ballots Transmitted by Other Means (Fax, Online)		<b>-0.012 (0.007)</b>			<b>-0.042 (0.006)</b>
Percent of Ballots Returned by Post			0.003 (0.002)		
Percent of Ballots Returned by Email				<b>-0.006 (0.003)</b>	-0.004 (0.004)
Percent of Ballots Returned by Other Means (Fax, Online)				<b>0.017 (0.008)</b>	<b>0.017 (0.006)</b>
Constant	<b>1.986</b>	<b>3.502</b>	<b>2.435</b>	<b>2.760</b>	<b>2.813</b>
N	42	34	36	26	25
R <sup>2</sup>	0.30	0.26	0.20	0.39	0.66

Dependent variable is logged percentage of ballots not returned. For the voter registration variable, the omitted category is Top-Down registration. Robust standard errors are reported in parentheses.

Source: EAC EAVS 2018.



# Analysis of Ballots Rejected with New Variables

Table 7. Analysis of Ballots Rejected, New Metrics, 2018

	I	II	III	IV
Total Voters in State (millions)	<b>0.062 (0.028)</b>	<b>0.065 (0.029)</b>	0.009 (0.013)	0.016 (0.015)
Registration Facility Score	-0.064 (0.231)	-0.002 (0.257)	0.222 (0.195)	<b>0.388 (0.189)</b>
Ballot Facility Score	<b>-0.454 (0.261)</b>	-0.233 (0.518)		
Percent of Ballots Transmitted by Post	0.002 (0.937)			
Percent of Ballots Transmitted by Email		-0.006 (0.015)		
Percent of Ballots Transmitted by Other Means (Fax, Online)		-0.003 (0.015)		
Percent of Ballots Returned by Post			<b>0.019 (0.004)</b>	
Percent of Ballots Returned by Email				<b>-0.020 (0.005)</b>
Percent of Ballots Returned by Other Means (Fax, Online)				<b>-0.015 (0.006)</b>
Constant	<b>2.126</b>	1.659	-0.540	0.701
N	41	33	36	26
R <sup>2</sup>	0.14	0.13	0.44	0.49

Dependent variable is logged percentage of ballots rejected. Robust standard errors are reported in parentheses.

Source: EAC EAVS 2018.

